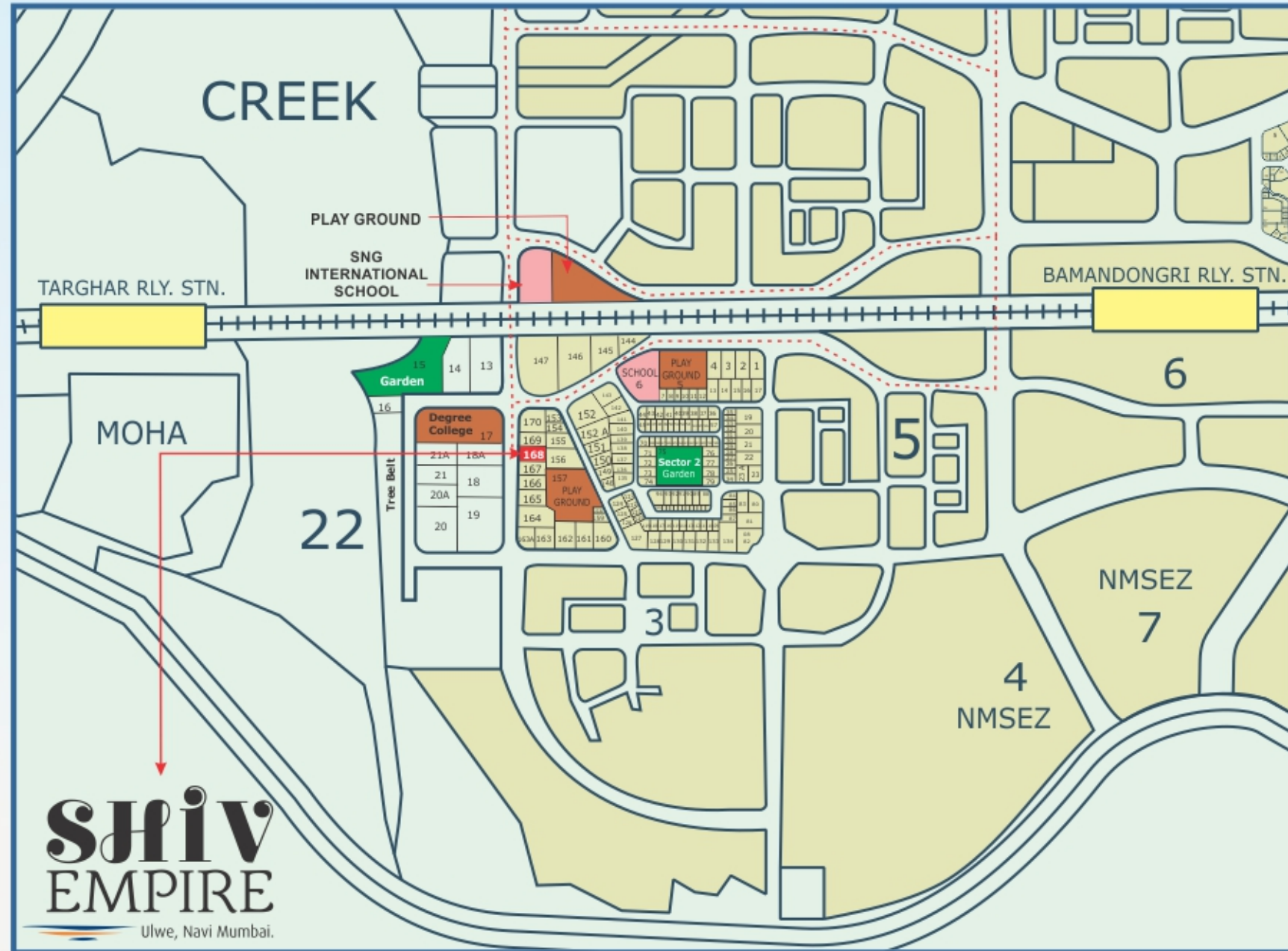


LOCATION MAP



PROJECT BY:



SHIV INFRA

HOMES · LIVES · DREAMS

Office & Site Address : Plot No. 168, Sector 2, Ulwe, Navi Mumbai 410206.

Email : shivinfra168@gmail.com

Architects: DESTINATION | **R.C.C. Consultants:** Adharshila Consultants



MAHARERA NO.: P52000020470

BOOKING CONTACT NO.

9967437789 / 8080202718 / 9022873902 / 8425050625

The information contained in this brochure is indicative of the kind of development is proposed. It is prepared and issued in good faith and is for guidance only. It does not constitute part of any offer or contract. It is subject to the approval of the authorities. In the interest of the continuing improvement of the project and or any changes as suggested by the authorities the developers reserve the right to alter the layout, plans, specifications or features of the building without any prior notice or obligation to any buyer's in the project. The photographs and the artists impressions in the brochure are for reference only.

a Home that rise in to the Empire...



**SHIV
EMPIRE**
Ulwe, Navi Mumbai.

panjat
9819 5045 67

All Images are artist Impression



PROJECT FEATURES

Experience the rise of an icon at ULWE. Explore the icon of luxury which is setting up a posh, pleasant and pleasurable lifestyle for you. Embedded with world class amenities and podium features with ultra-luxurious specious 1BHK & 2 BHK homes of **SHIV EMPIRE** offer you a life in a well-connected location with a world of conveniences all around.

- Clear Title CIDCO Transfer plot
- Ground +12 Storey Tower
- Exclusive 1BHK & 2BHK Flats & Shops Available
- Branded High Speed Elevators
- Ample Space on Ground Floor for Parking
- Power Backup for Lifts & Common Areas
- CCTV Camera Surveillance
- Intercom facility provided in each flat
- Advanced & High Tech Fire Fighting System
- 24 hours security guard with security cabin
- Loans Available & Approved by all leading Financial Institutions & Banks

**SHIV
EMPIRE**
Ulwe, Navi Mumbai.



Artist Impression



PROJECT AMENITIES

FLOORING

- 24" X 24" Vitrified double charge Tiles for Living Room, Kitchen & Bedrooms
- Anti skid flooring in Toilet & Bath

KITCHEN

- Granite Kitchen Platform with S. S. Sink
- 18"x12" Designer Glazed Tiles above Kitchen Platform upto Beam Level
- Provision for water purifier point

DOORS

- Decorative Laminate Finish with Wooden Frame for Main Door and Internal Wooden Doors
- Granite Frame for Toilet & Bathroom Doors

WINDOW

- Powder Coated Aluminum Sliding Window in all Rooms and Kitchen
- Granite Molding in all Windows

BATH & W.C.

- Good Quality Sanitary Fittings

- Concealed Plumbing with Good Quality C.P. Fittings
- 18"x12" Designer Glaze Tiles in all Toilet & Bath upto Beam Level

WALL FINISH

- Internal Wall with White Putty Finish
- Plastic Emulsion Paints for Internal Walls
- Acrylic Paints for External Walls

WIRING

- Concealed Copper Wiring with Modular Switches
- Telephone Point in Living Room & Cable Point in Living Room and Master Bedroom
- Intercom in all Flats

WATER TANK

- Under Ground and Overhead Water Tank with Adequate Water Storage Capacity

TERRACE

- Special Water Proofing Treatment with China Chips

GATE

- Decorative Gates will be Provided



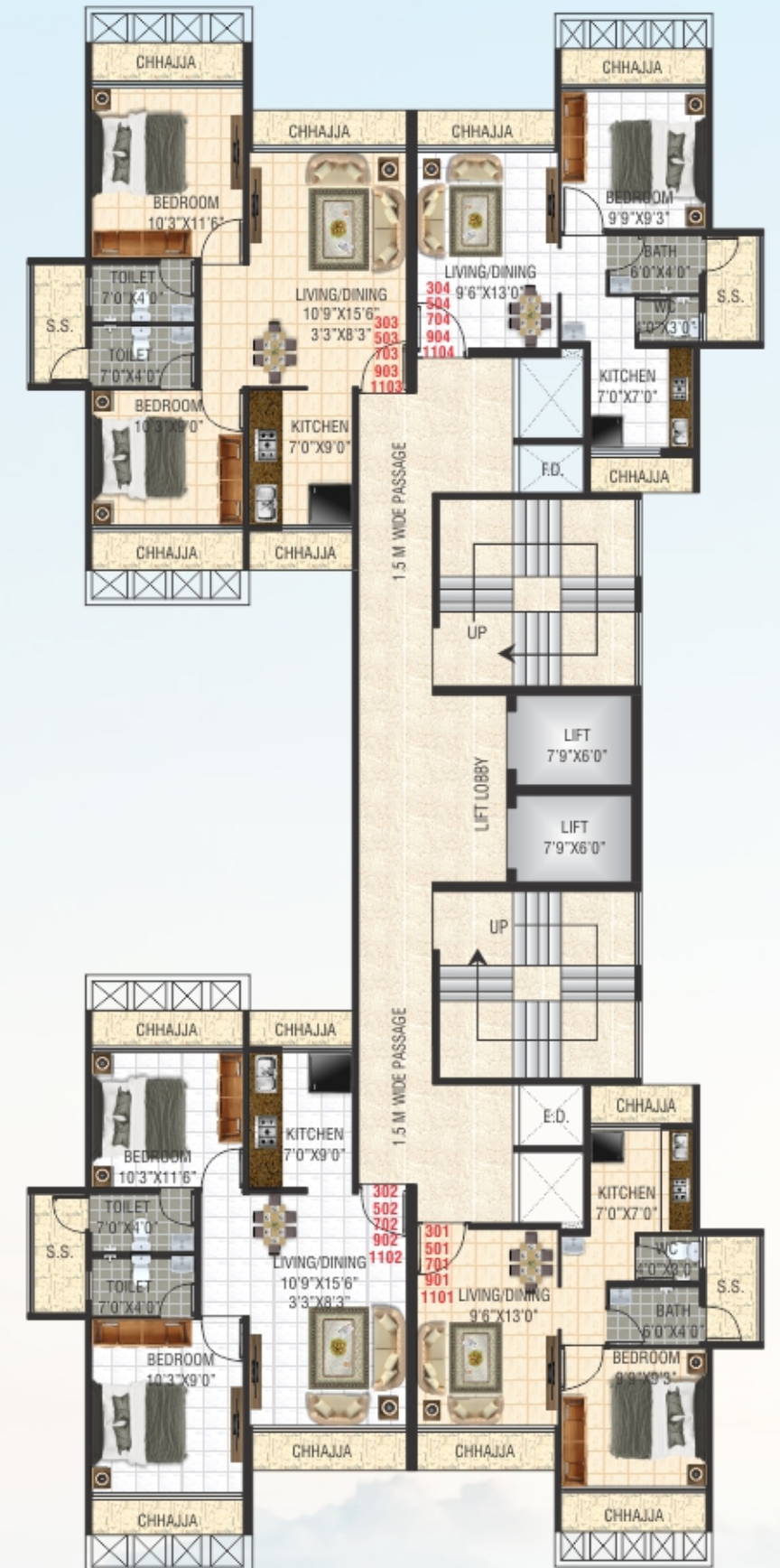
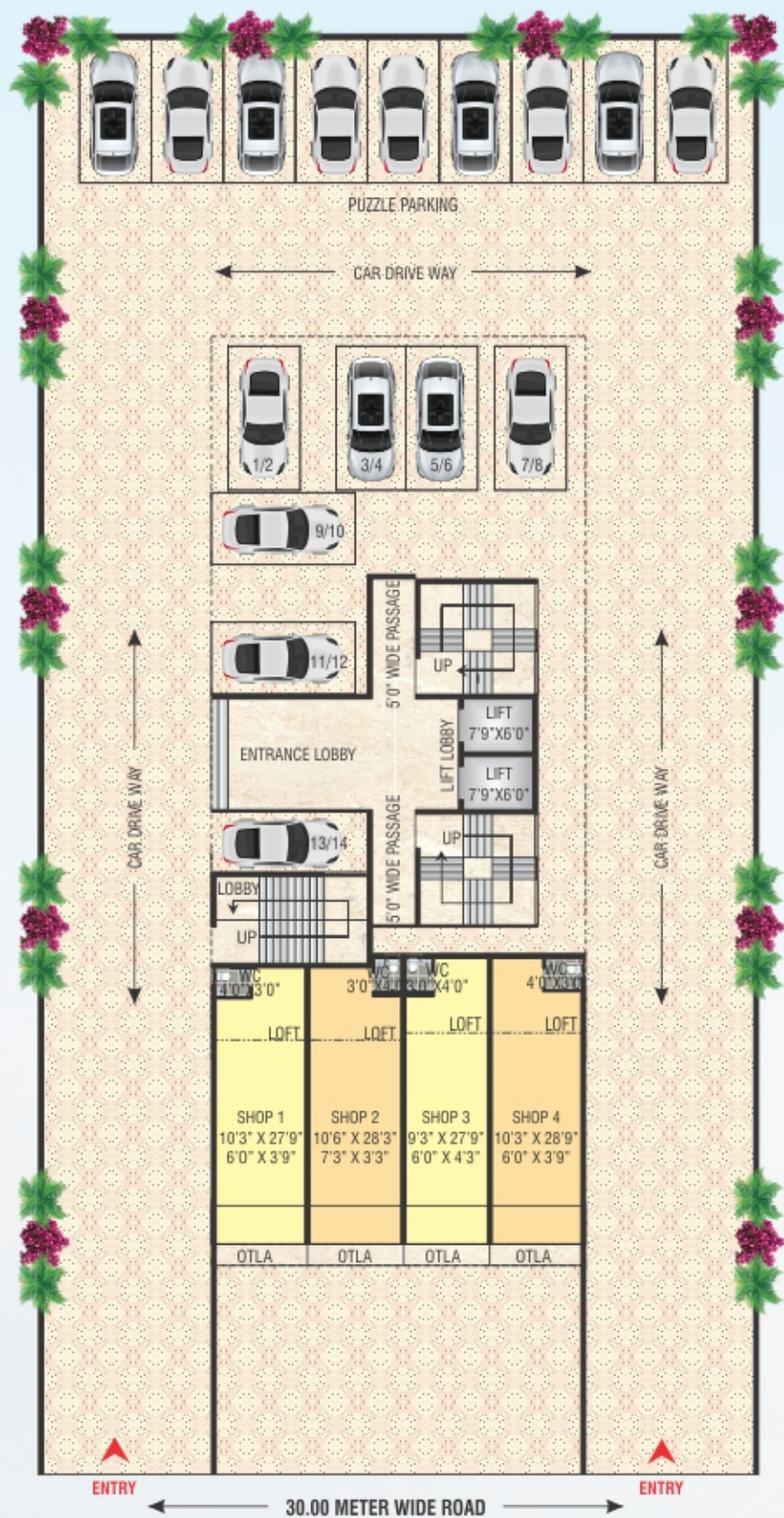


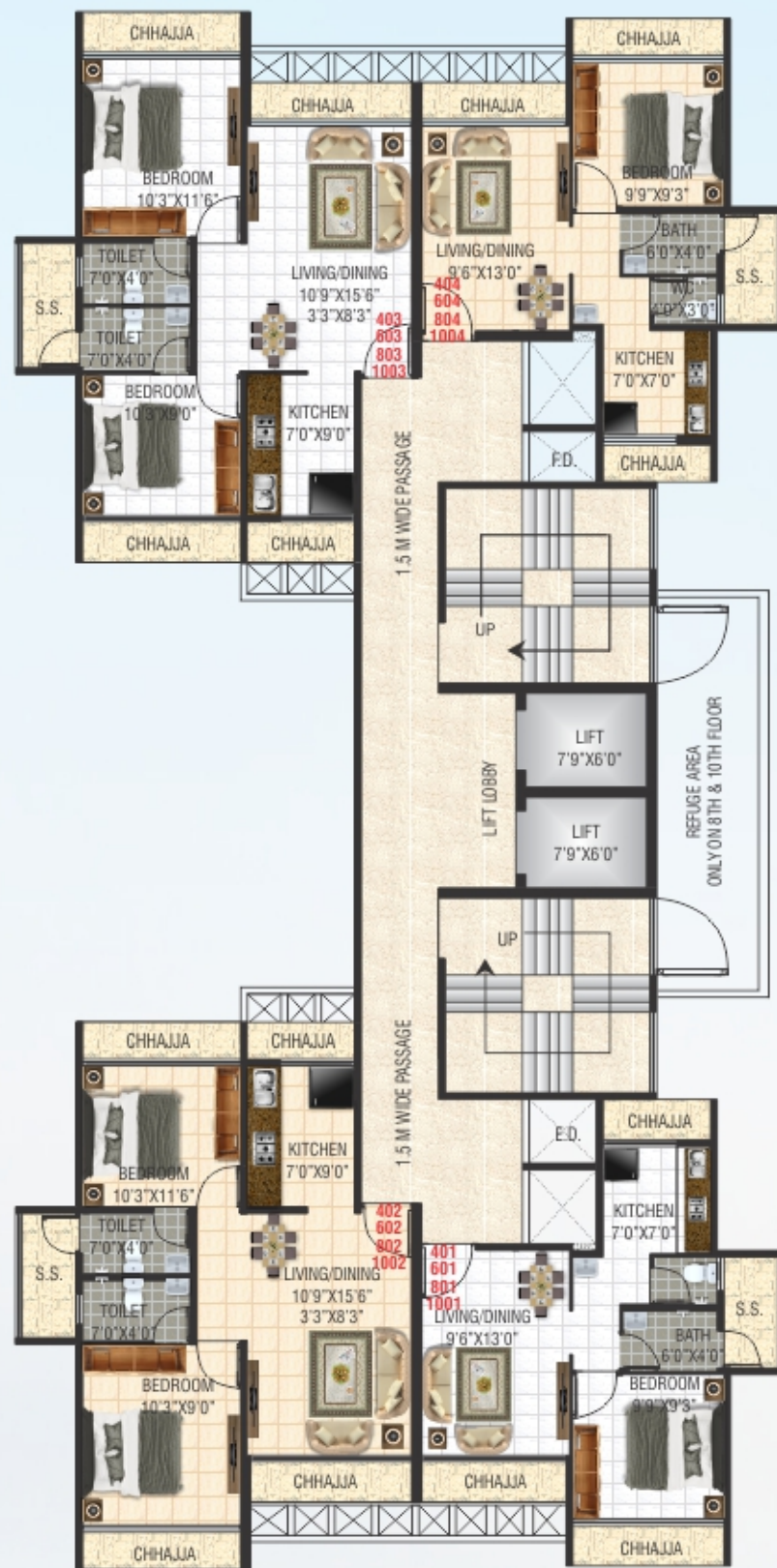
PROJECT AMENITIES

SHIV EMPIRE pampers you with state-of -the-art Fitness Center and Garden on podium level. And all the brilliantly built spaces fill your life with a lot of excitement & fun. A walk in the podium garden would refresh and flush out the tension from you and free your mind. It's a place where you would enjoy every single moment.

- Fully Equipped Gymnasium
- Lush green landscaped garden
- Children play area & Sandpitch
- Indoor Games
- Gazebo for seatings
- Society office







4TH, 6TH, 8TH & 10TH FLOOR PLAN



12TH FLOOR PLAN



LOCATION FEATURES

Today we are living in a fast-paced life, where life demands fast access to everything. Excellent connectivity through the Rail & Road mediums plays an important role in our life by saving out lot of travelling time. **SHIV EMPIRE** is located at Ulwe, presents beautiful opportunities by putting everything within a circle. And many futuristic developments like SEZ, International Airport, Metro Rail and many more would enhance the value of property in the near future.

- Excellent Connectivity to Palm Beach Road, Mumbai - Pune Express Highway, CBD - Belapur, Nerul, Mumbai - Goa Highway, J.N.P.T. etc.
- 10 Minutes Walking Distance from Bamandongari Rly. Stn.
- 5 Minutes Walking to Proposed Targhar Rly. Stn.
- 5 Minutes Drive from the Navi Mumbai International Airport
- Banks, Markets, Hospitals, Schools, Colleges, Gardens, Play Grounds, Stadium, Railway Station, Mall & Multiplexes, Central Park, Iscon Temple, Wonders Park, Restaurants, Hotels at Proximate Distance from the Project Site
- 2.5 Km. Away from Proposed Nhava Sheva-Sewree Sea Link